

Dry Vacuum Pump (Standard Type) DAL/DAP/DAT Series

Features

ULVAC KIKO offers a complete line of dry, diaphragm type vacuum pumps which utilize rubber reciprocating diaphragms to produce vacuum.

Diaphragm Type Dry Vacuum Pumps differ from G Series Direct Drive Oil-Sealed Rotary Vacuum Pumps in that they do not require oil filters, they keep their surroundings free of exhaust, and they are easy to maintain.

The DA Series (standard type) /DAT/DAU Series provide excellent

pumping speed, ultimate pressure and high reliability.

Single and double stage versions are available with pumping capacities ranging from 30 L/min. to 100 L/min..

Applications

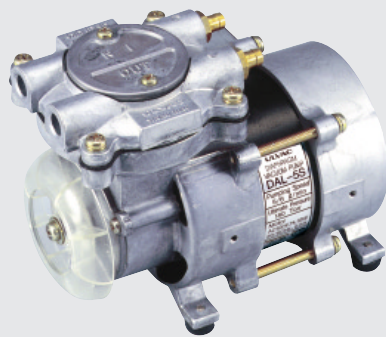
Due to the minimal maintenance requirements, this pump is used in many applications such as:

- Vacuum chucks, wafer and tip handling devices.
- Vacuum tweezers, medical appliances, printing equipment.
- Automatic packing machines, optical appliances.

Diaphragm Type Dry Vacuum Pump

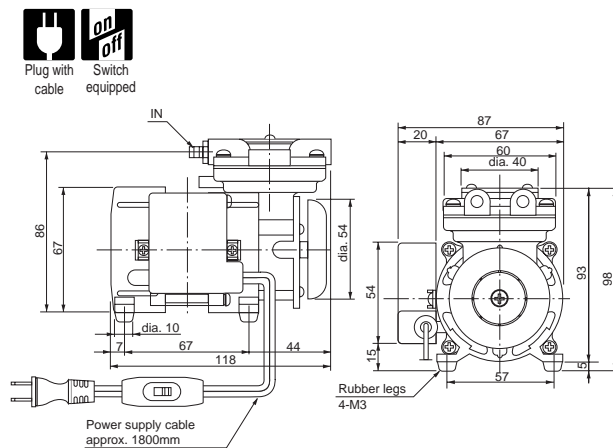
DAL-5S

Actual pumping speed



With built-in thermal protector

External Dimension Diagram (unit: mm)



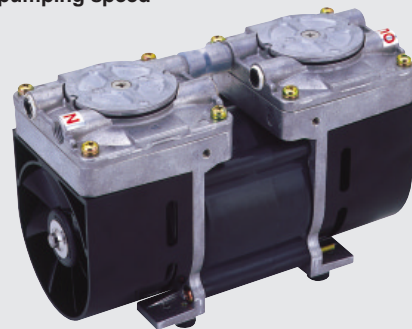
Specifications

	Unit	DAL-5S
Actual Pumping Speed	L/min.	5/6 (50/60Hz)
Ultimate pressure	Pa	24.0 x 10 ³
Motor		Single phase, 100V, 10W, 4P, Condenser run
Full load current	A	0.5
Weight	kg	1.3
Inlet, outlet pipe diameter	mm	O.D. 6 x I.D. 3.5 (M8 x 1)
Ambient operation temp. range	°C	7 ~ 40
Overall dimensions	mm	87(W) x 118(L) x 98(H)

Diaphragm Type Dry Vacuum Pump

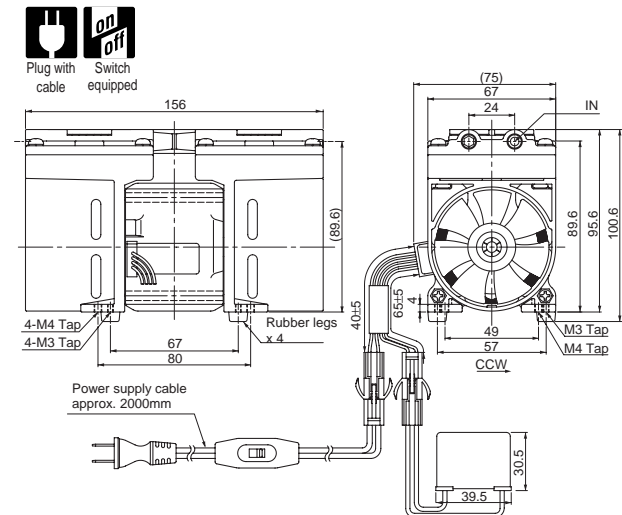
DAP-6D

Actual pumping speed



With built-in thermal protector

External Dimension Diagram (unit: mm)



Specifications

	Unit	DAP-6D
Actual Pumping Speed	L/min.	6/7 (50/60Hz)
Ultimate pressure	Pa	6.65 x 10 ³
Motor		Single phase, 100V, 10W, 4P, Condenser run
Full load current	A	0.39/0.43 (50/60Hz)
Weight	kg	1.8
Inlet, outlet pipe diameter		Rc 1/8
Ambient operation temp. range	°C	0 ~ 40
Overall dimensions	mm	75(W) x 156(L) x 100.6(H)

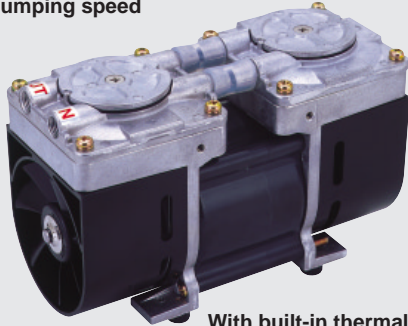
• DAL/DAP/DAT Series

Model	Actual pumping speed(L/min)	Ultimate pressure(Pa)	Motor	Weight (kg)	Inlet pipe diameter O.D. x I.D.(mm)	Overall dimensions W x L x H(mm)
*DAL-5S	5/6(50/60Hz)	24.0 x 10 ³	Single phase, 100V, 10W, 4P, Condenser run	1.3	6 x 3.5	87 x 118 x 98
*DAP-6D	6/7(50/60Hz)	6.65 x 10 ³	Single phase, 100V, 10W, 4P, Condenser run	1.8	Rc 1/8	75 x 156 x 100.6
*DAP-12S	12/14(50/60Hz)	24.0 x 10 ³	Single phase, 100V, 10W, 4P, Condenser run	1.8	Rc 1/8	75 x 156 x 100.6
*DAP-15	15/18(50/60Hz)	39.9 x 10 ³	Single phase, 100V, 40W, 4P, Condenser run	3.6	9 x 5 (RC 1/4)	111 x 196 x 154
*DAL-181D	180/210(50/60Hz)	3.3 x 10 ³	Three phase, 200V, 0.5kW, 4P	37.0	21 x 15	338 x 523.6 x 274
*DAL-361S	360/390(50/60Hz)	17.3 x 10 ³	Three phase, 200V, 0.5kW, 4P	37.0	21 x 15	338 x 523.6 x 274
*DAP-30	30/36(50/60Hz)	33.3 x 10 ³	Single phase, 100V, 90W, 4P, Capacitor run	5.0	9 x 5	142 x 215 x 180
*DAT-50D	50/55(50/60Hz)	3.3 x 10 ³	Single phase, 100V, 200W, 4P, Split phase starting	11.0	12 x 8	150 x 232 x 305
*DAT-100S	100/110(50/60Hz)	13.3 x 10 ³	Single phase, 100V, 200W, 4P, Split phase starting	11.0	12 x 8	150 x 232 x 305

* : With built-in thermal protector

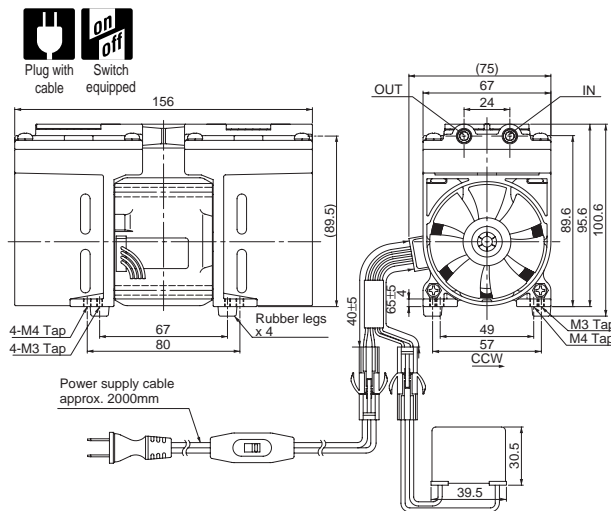
Diaphragm Type Dry Vacuum Pump DAP-12S

Actual pumping speed



With built-in thermal protector

External Dimension Diagram (unit: mm)

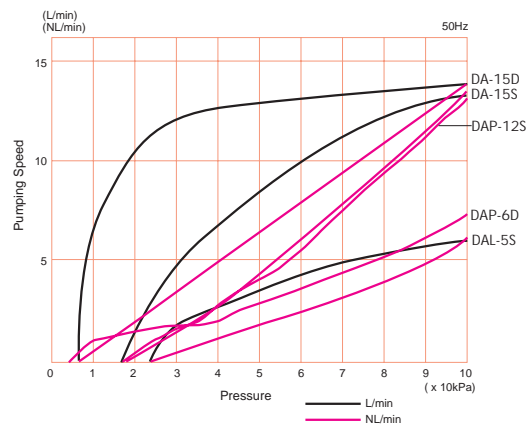


Specifications

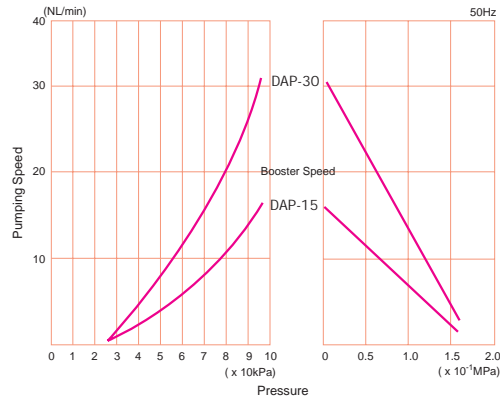
	Unit	DAP-12S
Actual Pumping Speed	L/min.	12/14 (50/60Hz)
Ultimate pressure	Pa	24.0 x 10 ³
Motor		Single phase, 100V, 10W, 4P, condenser run
Full load current	A	0.39/0.43 (50/60Hz)
Weight	kg	1.8
Inlet, outlet pipe diameter		Rc 1/8
Ambient operation temp. range	°C	0 ~ 40
Overall dimensions	mm	75(W) x 156(L) x 100.6(H)

Pumping Speed Curve

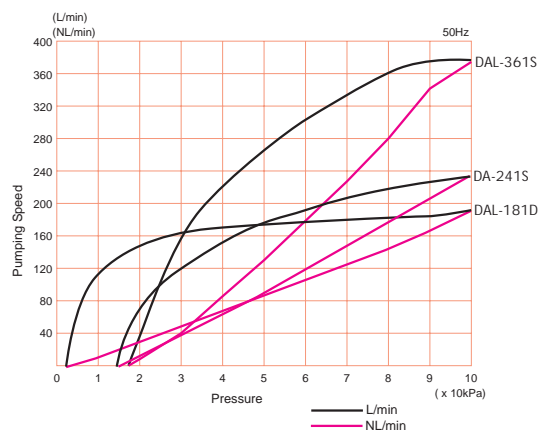
DAL-5S/DAP-6D/DAP-12S/DA-15S/DA-15D



DAP-15/DAP-30



DAL-181D/DAL-361S



*Pumping Speed Curve of DAT series are provided on page 6.