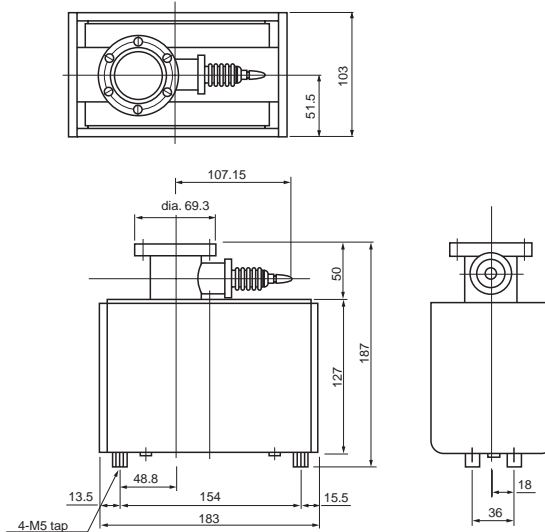


# Acter Pump PST-030CU/PST-030AU

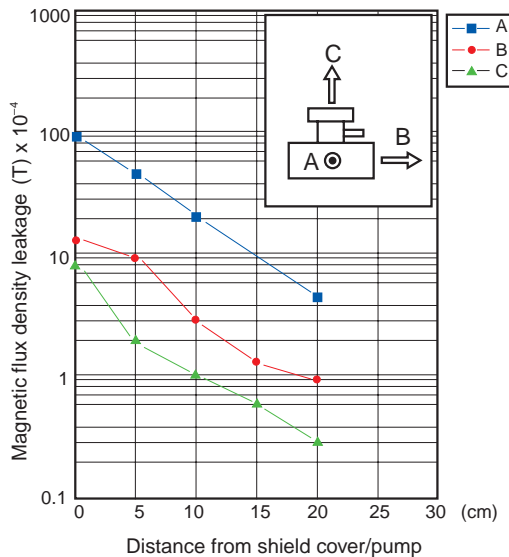


### External Dimension Diagram

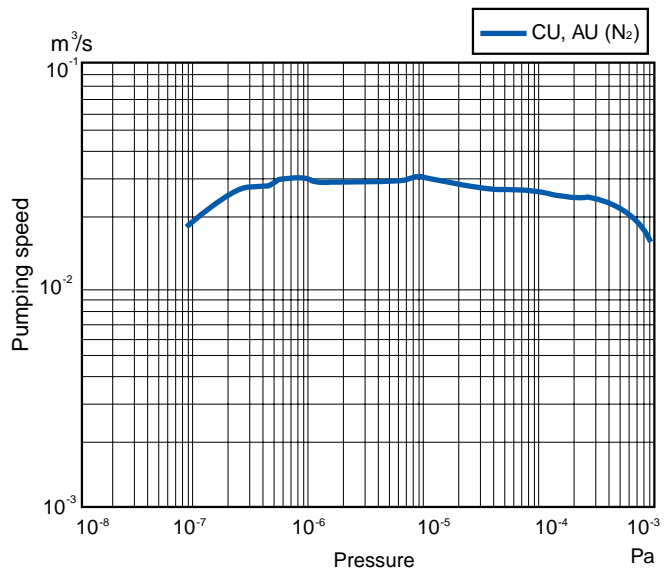
(unit: mm)



### Magnetic Flux Density Leakage



### Pumping Speed Curve



### Specifications

Item	Model	PST-030CU	PST-030AU
		Active gas pumping type	Inert gas pumping type
Pumping speed (operating pumping speed)	N <sup>2</sup>	0.03m <sup>3</sup> /s (at 1 x 10 <sup>-7</sup> Pa 0.02 m <sup>3</sup> /s)	
Ultimate pressure	Pa	10 <sup>-9</sup> level	
Operating pressure	Pa	< 8 x 10 <sup>-3</sup> (recommended value) (Maximum operating pressure 1 x 10 <sup>-2</sup> ) *when GST-03L controller is used	
Inner volume	m <sup>3</sup>	Approx. 6.7 x 10 <sup>-4</sup>	
Number of acter elements		CXII type cells x 1 sets	AXII type cell x 1 sets
Connecting flange type		UFC070 *1	
Recommended controller		GST-03L	
Voltage applied		DC + 7.5 kV	
Standards bakeout temperature	°C	250 (resistant to high temperature up to 350)	
Weight	kg	approx. 9.5 kg	
Ambient operating environment (atmospheric conditions)	Temperature range °C	0 - 40	
	Humidity range	Less than 85 (no dew)	
External dimensions W x D x H *2	mm	183 x 103 x 187	

\*1: UFC is an ultra-high vacuum flange for metal gaskets complying with ULVAC standards. It meets JVIS (Japan Vacuum Industry Standards Association) and International standards (ISO).  
\*2: W=Width, D=Depth, H=Height