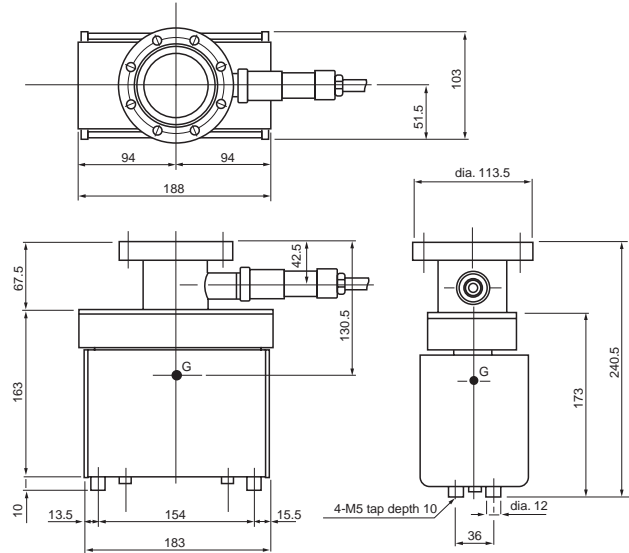


Acter Pump PST-050CU/PST-050AU

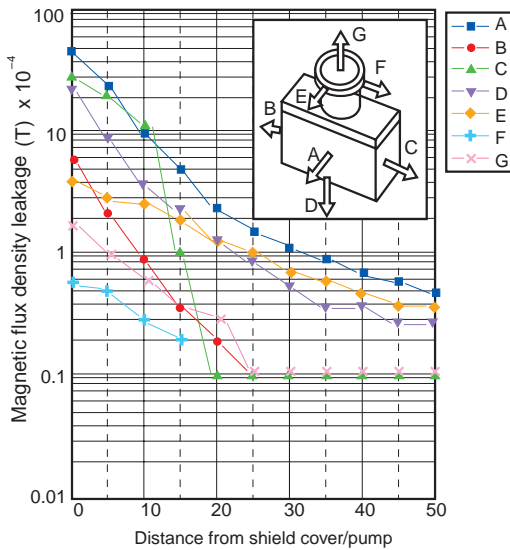


External Dimension Diagram

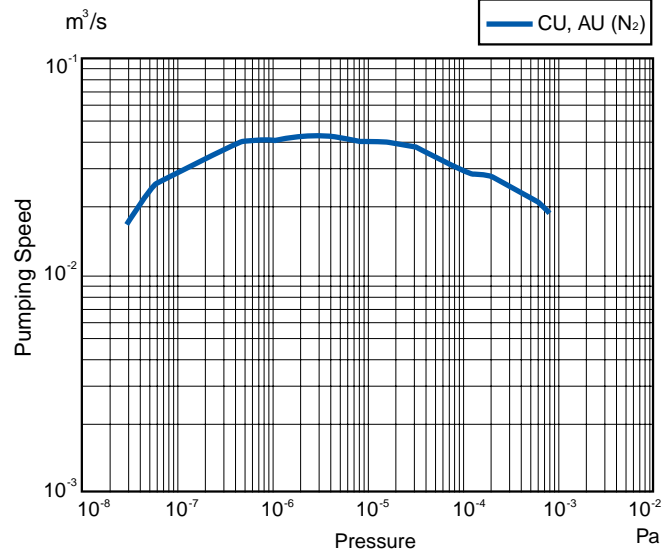
(unit: mm)



Magnetic Flux Density Leakage



Pumping Speed Curve



Specifications

Item	Model	PST-050CU		PST-050AU	
		Active gas pumping type		Inert gas pumping type	
Pumping speed (operating pumping speed)	N ₂	0.045 m ³ /s (at 1 x 10 ⁻⁷ Pa 0.03 m ³ /s)			
Ultimate pressure	Pa	10 ⁻⁹ level			
Operating pressure	Pa	< 8 x 10 ⁻³ (recommended value) (Maximum operating pressure: 1 x 10 ⁻²) * when GST-03L controller is used			
Inner volume	m ³	Approx. 1.3 x 10 ⁻³			
Number of acter elements		CX II type cells x 1 sets		AX II type cells x 1 sets	
Connecting flange type		UFC114 *1			
Recommended controller		GST-03L			
Voltage applied		DC+7.5 kV			
Standards bakeout temperature	°C	250 (resistant to high temperature up to 350)			
Weight	kg	Approx.12 with a heater			
Ambient operating environment (atmospheric conditions)	Temperature range °C	0 - 40			
	Humidity range	Less than 85 (no dew)			
Dimensions W x D x H *2	mm	209x113.5x240.5 without a heater		209x163x240.5 with a heater	
Power required by heater unit	V	Single phase 200 V			

*1: UFC is an ultra-high vacuum flange for metal gaskets complying with ULVAC standards. It meets JVIS (Japan Vacuum Industry Standards Association) and International standards (ISO).

*2: W=width, D=depth, H=Height