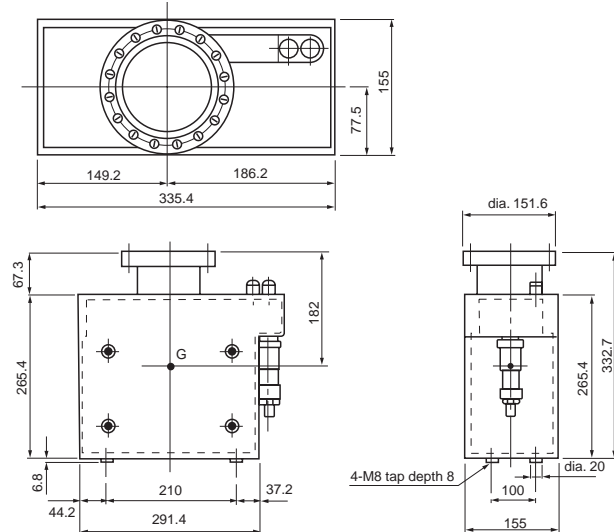


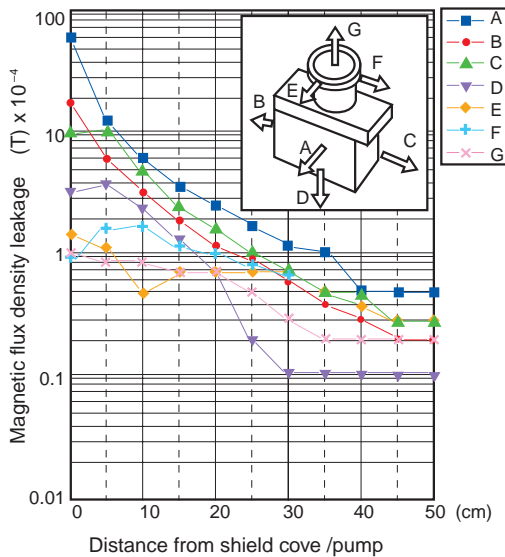
Acter Pump PST-100CX/PST-100AX



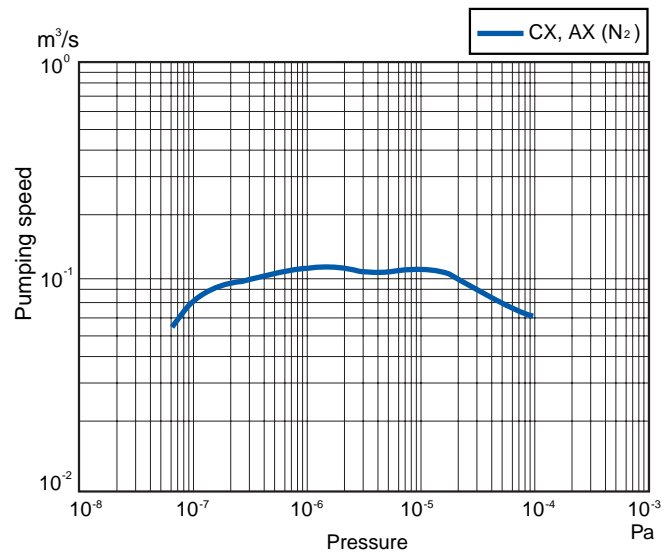
External Dimension Diagram (unit: mm)



Magnetic Flux Density Leakage



Pumping Speed Curve



Specifications

Item	Model	PST-100CX	PST-100AX
		Active gas pumping type	Inert gas pumping type
Pumping speed (operating pumping speed)	N ₂	0.10 m ³ /s (at 1 x 10 ⁻⁷ pa 0.08 m ³ /s)	
Ultimate pressure	Pa	10 ⁻⁹ level	
Operating pressure	Pa	< 5.0 x 10 ⁻³ (recommended value) (Maximum operating pressure: 1 x 10 ⁻²) *when GST-03L controller is used	
Inner volume	m ³	Approx. 3.3 x 10 ⁻³	
Number of acter elements		CX II type cells x 1 sets	AX II type cells x 1 sets
Connecting flange type		UFC152 ^{*1}	
Recommended controller		GST-03L	
Voltage applied		DC+7.5 kV	
Standards bakeout temperature	°C	250 (resistant to high temperature up to 350)	
Weight	kg	Approx.37 with a heater	
Ambient operating environment (atmospheric conditions)	Temperature range °C	0 - 40	
	Humidity range	Less than 85 (no dew)	
Dimensions W x D x H ^{*2}	mm	330.4 x 151.6 x 337.5	
Power required by heater unit		Single phase 200 V	

*1: UFC is an ultra-high vacuum flange for metal gaskets complying with ULVAC standards. It meets JVIS (Japan Vacuum Industry Standards Association) and International standards (ISO).

*2: W=Width, D=Depth, H=Height