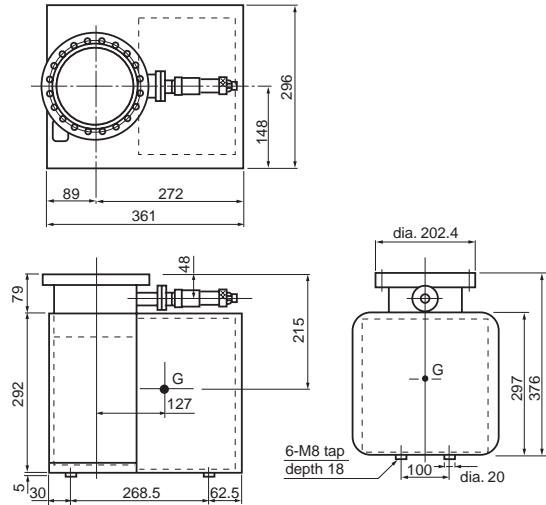


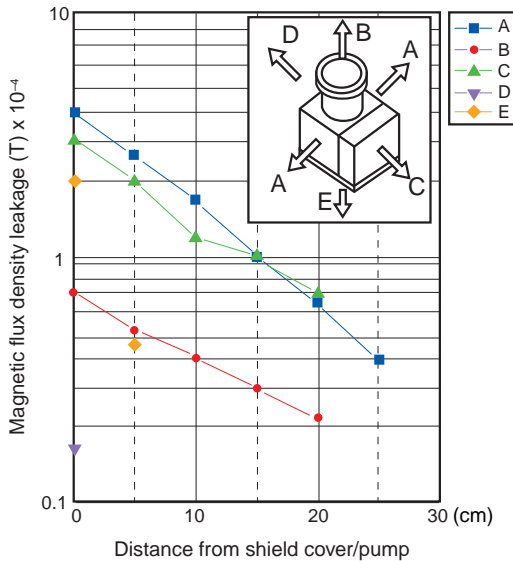
Acter Pump PST-200CX II / PST-200AX II



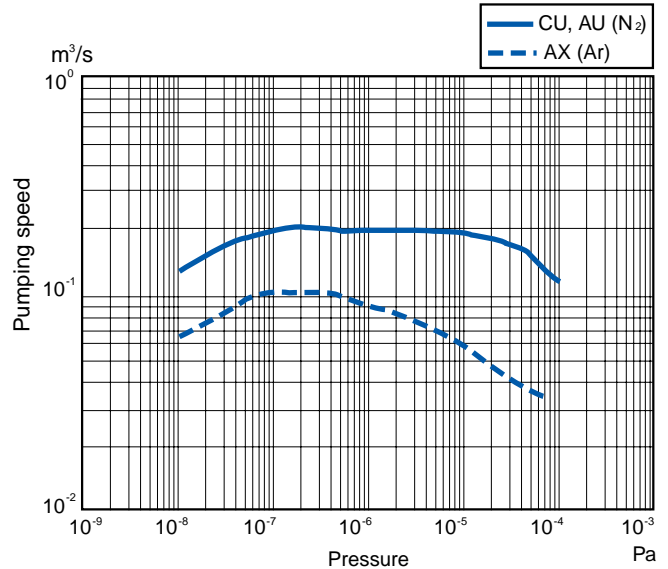
External Dimension Diagram (unit: mm)



Magnetic Flux Density Leakage



Pumping Speed Curve



Specifications

Item	Model	PST-200CX II	PST-200AX II
		Active gas pumping type	Inert gas pumping type
Pumping speed (operating pumping speed) at 1 x 10 ⁻⁷ Pa	N ₂	0.20 m ³ /s	0.20 m ³ /s
	Ar	0.02 m ³ /s	0.105 m ³ /s
Ultimate pressure	Pa	10 ⁻¹⁰	
Operating pressure	Pa	< 4.0 x 10 ⁻³ (recommended value) (Maximum operating pressure: 1.3 x 10 ⁻²) *when GST-03L controller is used	
Inner volume	m ³	Approx. 0.011	
Number of acter elements		CX II type cells x 2 sets	AX II type cells x 2 sets
Connecting flange type		UFC203 ^{*1}	
Recommended controller		GST-03L	
Voltage applied		DC+7.5 kV	
Standards bakeout temperature	°C	250 (resistant to high temperature up to 350)	
Weight	kg	Approx. 65	
Ambient operating environment (atmospheric conditions)	Temperature range °C	0 - 40	
	Humidity range	Less than 85 (no dew)	
Dimensions W x D x H ^{*2}	mm	296 x 361 x 376	
Power required by heater unit		Single phase 200 V, approx. 600 W (with shield cover)	

*1: UFC is an ultra-high vacuum flange for metal gaskets complying with ULVAC standards. It meets JVIS (Japan Vacuum Industry Standards Association) and International standards (ISO).

*2: W=Width, D=Depth, H=Height