

Oil Rotary Vacuum Pump D-DK Series

The D-DK series oil rotary pumps with direct-drive motors are improved versions of the former, but very popular, D-D series pumps.

The D-DK series, completed through the use of material engineering and precision machining technology, are highly reliable and applicable in a broad range of fields.

D-650DK



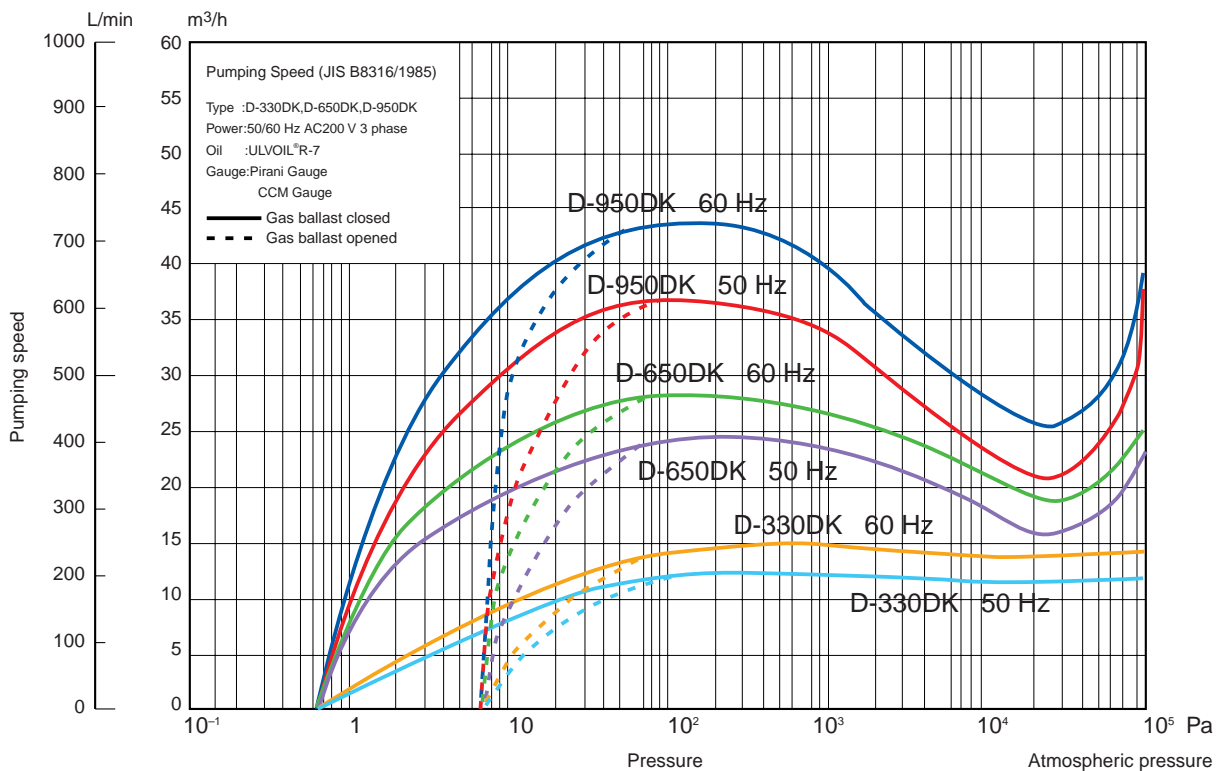
D-330DK



D-950DK



Pumping Speed Curve



* These are representative curves based on actual measurement data.

Features

- Highly reliable pump that is particularly well suited for continuous-duty industrial applications.**
 Through the use of newly developed springless vanes, problems resulting from spring breakage have been eliminated.
- Compact and light-weight**
 Easy maintenance with the all aluminum design pump body.
- Excellent abrasion and corrosion resistance**
 The aluminum alloy has undergone Tuftram® processing to further increase resistance to abrasion and corrosion.
- Compatible with conventional models**
 The external dimensions, suction and exhaust port sizes are exactly the same as the previous models (D-D series).

Specifications

Item	Model	D-330DK	D-650DK	D-950DK
Designed pumping speed m ³ /h (L/min)	50 Hz	15 (253)	30 (507)	46 (760)
	60 Hz	19 (309)	37 (618)	56 (928)
Ultimate pressure *1	Pa	6.7 x 10 ⁻¹		
Motor *2	kW	0.75 (6)	1.1 (6)	1.5 (6)
	(number of poles)			
Oil capacity	L	1.5	1.8	2.2
Pump oil *3		ULVOIL® R-7		
Cooling method		Air cooling		
Suction port diameter, JIS B2290		1B *4	VG40 or equivalent	VG50 or equivalent
Exhaust port diameter, JIS B2290		G1 1/2 (PF1 1/2)		G2 (PF2)
Weight (with motor)	kg	42	56	70
Dimensions L x W x H *5	mm	580 x 266 x 371	695 x 268 x 357	766 x 282 x 357
Standard accessories		motor, oil (for 1 pump), operation manual		
Options		TMX-1 oil mist trap		TMX-2 oil mist trap

Note: SI units are used in this catalog. The following conversion can be used for non-SI units:
 Ultimate pressure: 6.7 x 10⁻¹ Pa = 5 x 10⁻³ Torr

* 1 Measured with a Pirani gauge (Approx. 6.7 x 10⁻² Pa when measured with a McLeod vacuum gauge)

* 2 Drip-proof protected flange motor (3 phase, AC200 V 50/60 Hz, 220 V 60 Hz)

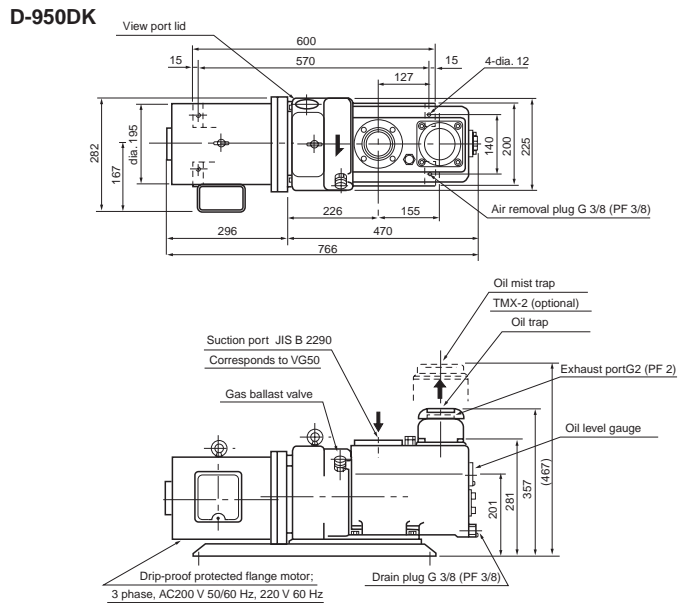
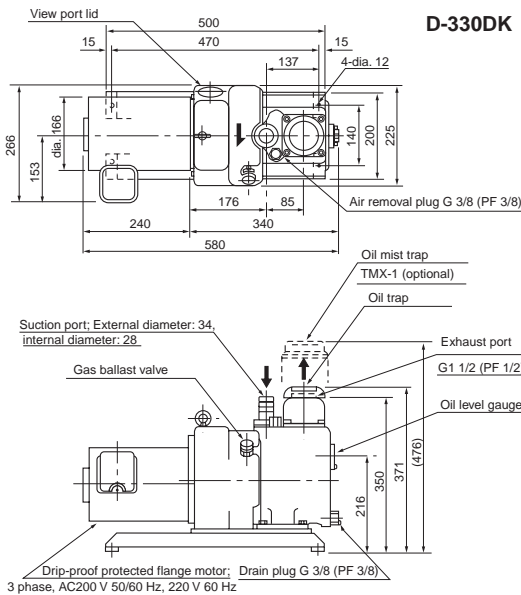
* 3 Other oil types are available upon request.

* 4 D-330DK is the suction tube model

* 5 L = length, W = width, and H = height

External Dimension Diagram

(unit: mm)



D-650DK

