

# Oil Rotary Vacuum Pump EC Series

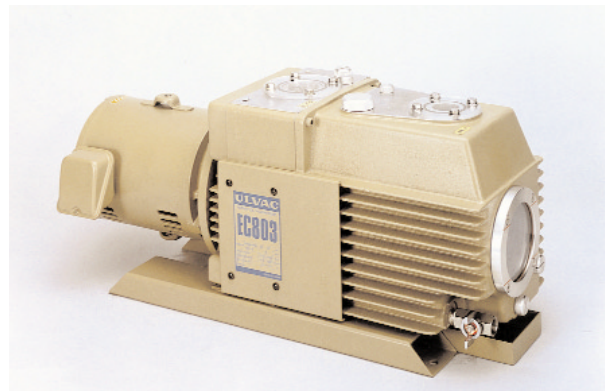
The EC series oil rotary pumps are designed for use with reactive gases.



EC403

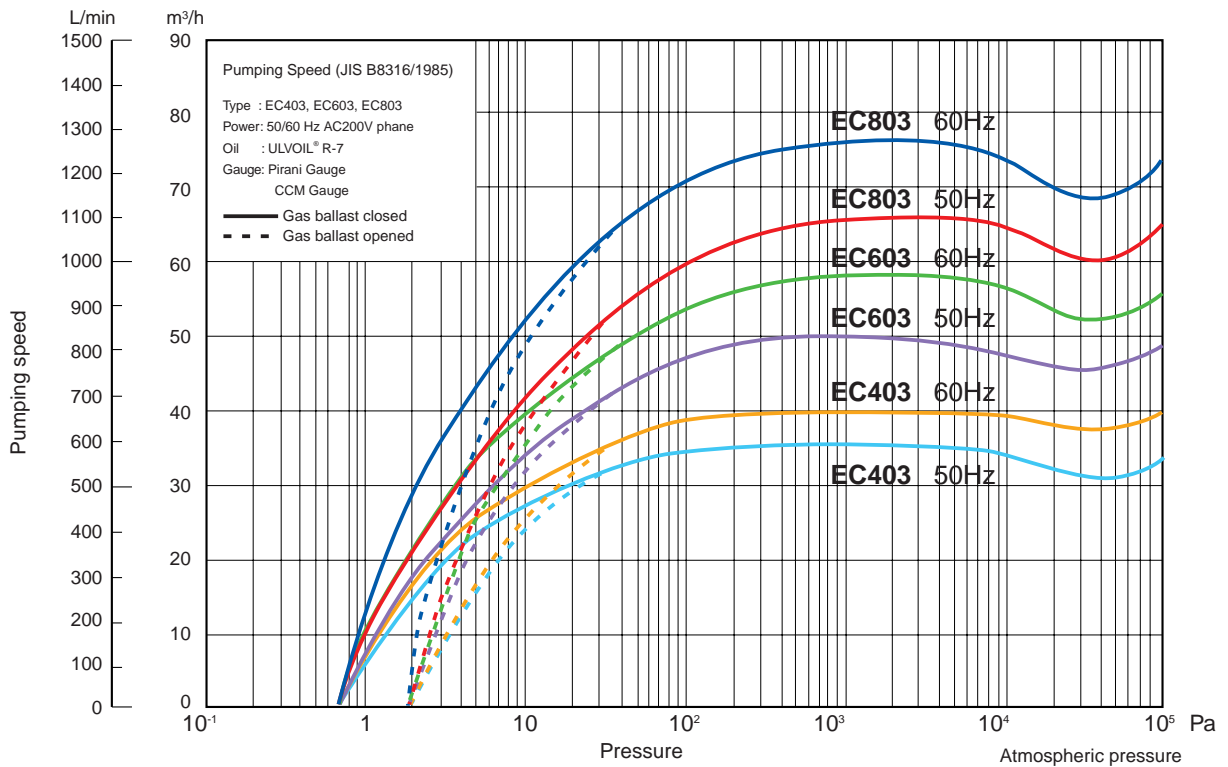


EC603



EC803

## Pumping Speed Curve



\* These are representative curves based on actual measurement data.

**Features**

- Springless Vanes**  
 Severe problems caused by spring breakage are eliminated.
- Self-cleaning oil level gauge**  
 Contaminants that form on the inner walls of the oil level gauge are washed off with a stream of the circulating oil.  
 Oil level checks are easy and problems caused by lack of oil are prevented.
- Excellent Corrosion Resistance**  
 Many corrosion resistant materials are used. (Seal material: Fluoride rubber, Bearings: Ceramic, Vane: Proprietary plastic, Other small parts: Stainless Steel)
- Forced oil Circulation**  
 Few clogs occur in the oil supply routes and pumping performance is consistent even over wide ranges of inlet pressures.

**Specifications**

Item	Model	EC403	EC603	EC803
Designed pumping speed m <sup>3</sup> /h (L/min)	50 Hz	40 (670)	60 (1000)	80 (1340)
	60 Hz	48 (800)	72 (1200)	96 (1600)
Ultimate pressure *1	Pa	6.7 x 10 <sup>-1</sup>		
Motor *2 (number of poles)	kW	1.5 (4)	2.2 (4)	3.7 (4)
Oil capacity	L	2.3-3.6	2.5-4.0	2.7-4.4
Pump oil *3		ULVOIL® Super R-7000		
Cooling method		Air cooled		
Suction port diameter, JIS B2290		Corresponds to VG50		
Exhaust port diameter, JIS B2290		Corresponds to VG40		
Weight (with motor)	kg	65	76	93
Dimensions L x W x H *4	mm	657 x 270 x 370	721 x 285 x 370	775 x 296 x 370
Standard accessories		Directly coupled motor, oil for 1 unit		
Options		TMX40 oil mist trap	TMX60 oil mist trap	TMX80 oil mist trap
		Pump oil: ULVOIL® Super R-7500, R-8000 ULVOIL®R-7, ULVOIL®R-96*3, suction tube with KF exhaust tube with KF, gas ballast valve (manual)		

Note: SI units are used in this catalog. The following conversion can be used for non-SI units:

Ultimate pressure: 6.7 x 10<sup>-1</sup> Pa = 5 x 10<sup>-3</sup> Torr

\* 1 Measured with a Pirani gauge (Approx. 6.7 x 10<sup>-2</sup> Pa when measured with a McLeod vacuum gauge)

\* 2 Standard motor: Drip-proof protected flange motor, 3 phase, AC200/220 V, 50/60 Hz

Options: The pump is also compatible with a fully sealed external fan motor, increased safety explosion-resistant motor, and pressure resistant explosion-resistant flange motor.

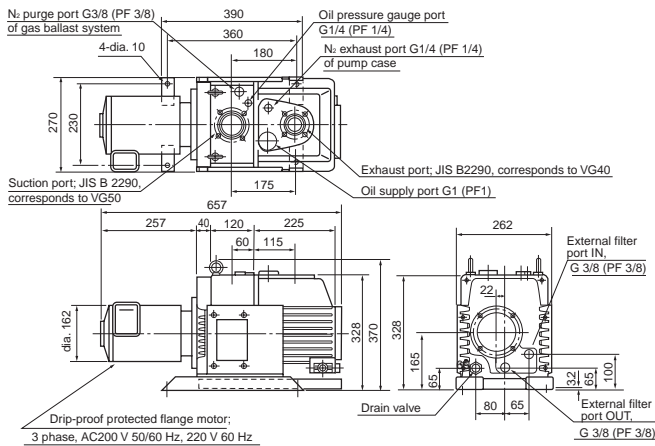
\* 3 Fluoride type pump oil

\* 4 L=length, W=width, and H=height

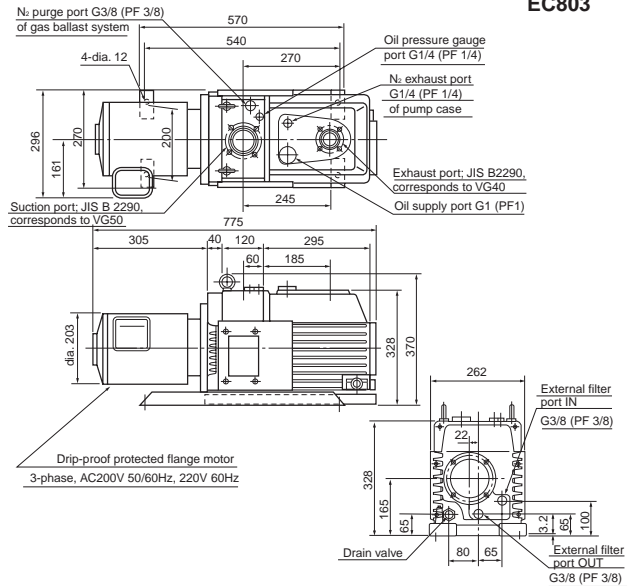
**External Dimension Diagram**

(unit: mm)

**EC403**



**EC803**



**EC603**

