

# Direct Drive Oil-Sealed Rotary Vacuum Pump (World-wide CE Type) GLD Series

## Features

It is a type applicable for the voltages all the world, for a multi-voltage motor is equipped to GLD series. 2 types, for single/three phase, are available. As it is applicable for various voltages by a simple wiring change, there is no necessity to change the motor for use in accordance with a voltage in the countries where the pump is used. For the single phase, it is used at 100V-120V or 200V-240V. The functional performance such as gas-ballast mechanism, oil back-flow prevention mechanism, large-sized oil-level gauge, etc. is equal to GLD Series. It is CE self-declared products.

### Direct Drive Oil-Sealed Rotary Vacuum Pump (World-wide CE Type)

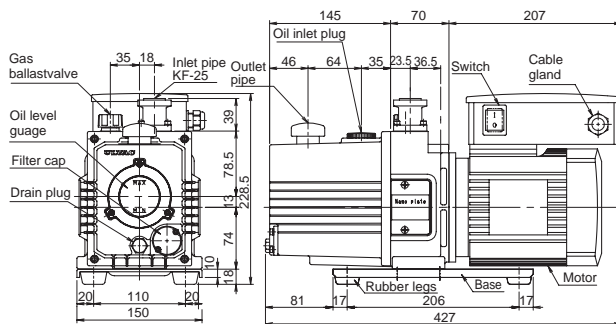
## GLD-040

#### Actual Pumping Speed



With built-in thermal protector

#### External Dimension Diagram (unit: mm)



#### Specifications

Unit	50Hz	60Hz
Actual Pumping Speed L/min.	40	48
Ultimate pressure Pa	G.V. Closed 6.7 x 10 <sup>-2</sup> G.V. Open (6.7)	
Motor	Single phase, 100-120, 200-240V, 200W, 4P, Condenser start and run	
Full load current A	4.20 (100V), 4.40 (110V), 4.60 (115V), 5.05 (120V), 2.10 (200V), 2.20 (220V), 2.30 (230V), 2.60 (240V)	3.60 (100V), 3.40 (110V), 3.40 (115V), 3.60 (120V), 18.0 (200V), 1.70 (220V), 17.0 (230V), 1.80 (240V)
Oil capacity mL	550 ~ 800	
Recommended oil	R-2	
Weight kg	approx 16	
Inlet pipe dimensions	NW-25	
Ambient operation temp. range °C	7 ~ 40	
Overall dimensions mm	150(W) x 427(L) x 228.5(H)	

## Applications

- For physics and chemical experiment, for analysis equipments, laser application equipments.
- Vacuum exhaust equipments, backing pumps for the electronic microscope.
- Semiconductor manufacture equipments, sputtering equipments, vacuum evaporation equipments.
- Vacuum dryers, freeze dryers.

### Direct Drive Oil-Sealed Rotary Vacuum Pump (World-wide CE Type)

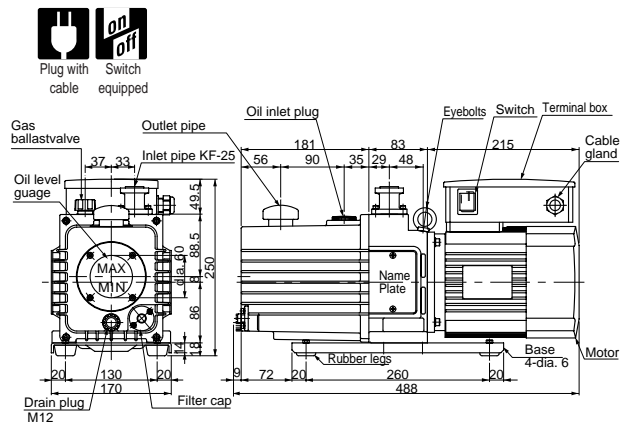
## GLD-136C

#### Actual Pumping Speed



With built-in thermal protector

#### External Dimension Diagram (unit: mm)



#### Specifications

Unit	50Hz	60Hz
Actual Pumping Speed L/min.	135	162
Ultimate pressure Pa	G.V. Closed 6.7 x 10 <sup>-2</sup> (6.7 x 10 <sup>-1</sup> ) G.V. Open (6.7)	
Motor	Single phase, 400W, 4 poles, Multiple-range motor AC100V-120V/200-240V	
Full load current A	7.50 (100V), 10.0 (120V), 3.80 (200V), 5.00 (240V)	6.50 (100V), 6.50 (120V), 3.40 (200V), 3.20 (240V)
Oil capacity mL	1,000	
Recommended oil	SMR-100	
Weight kg	26	
Inlet pipe dimensions	KF-25	
Ambient operation temp. range °C	7 ~ 40	
Overall dimensions mm	170(W) x 488(L) x 250(H)	

• GLS/GDL Series

Model	Actual Pumping Speed (L/min)	Ultimate pressure (Pa)	Motor	Weight (kg)	Inlet pipe dimensions	Overall dimensions W x L x H (mm)
* ⊙ ★ GLD-040	40/48(50/60Hz)	G. V. closed 6.7 x 10 <sup>-2</sup> G. V. open 6.7	Single phase, 100-120,200-240V, 200W, Condenser start and run	approx 16	KF-25	150 x 427 x 228.5
* ⊙ ★ GLD-136A	135/162(50/60Hz)	G. V. closed 6.7 x 10 <sup>-2</sup> G. V. open 6.7	Three phase, 400W, 4poles, Multiple-range motor AC200-240/380-460V	24	KF-25	170 x 488 x 約240
* ⊙ ★ GLD-136C	135/162(50/60Hz)	G. V. closed 6.7 x 10 <sup>-2</sup> G. V. open 6.7	Single phase, 400W, 4poles, Multiple-range motor AC100-120V/200-240V	26	SMR-100	170 x 488 x 250
* ⊙ ★ GLD-201A	200/240(50/60Hz)	G. V. closed 6.7 x 10 <sup>-2</sup> G. V. open 6.7	Three phase, 550W, 4poles, Multiple-range motor AC200-240/380-460V	28	KF-25	170 x 516 x 約240
* ⊙ ★ GLD-201B	200/240(50/60Hz)	G. V. closed 6.7 x 10 <sup>-2</sup> G. V. open 6.7	Single phase, 550W, 4poles, Multiple-range motor AC100-120/200-240V	28	KF-25	170 x 516 x 250
* ⊙ ★ GLD-280	280/336(50/60Hz)	G. V. closed 6.7 x 10 <sup>-2</sup> G. V. open 6.7	Three phase, 200-240V/380-460V	32	KF-25	181 x 544 x 269

\* : Thermal protector equipped. ⊙ : Back flow prevention mechanism equipped ⊙ : Gas ballast valve equipped. ★ : CE

Direct Drive Oil-Sealed Rotary Vacuum Pump (World-wide CE Type)

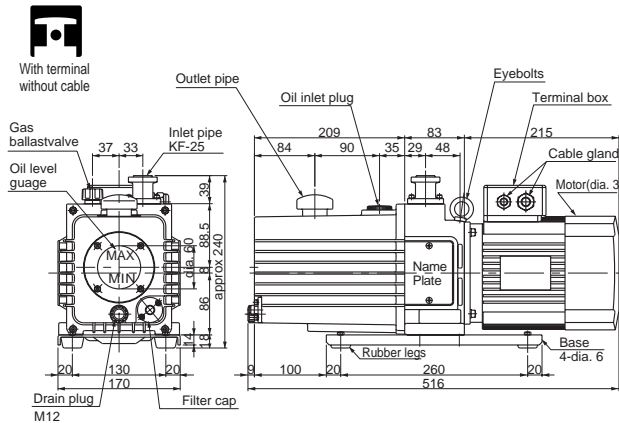
GLD-201A

Actual Pumping Speed



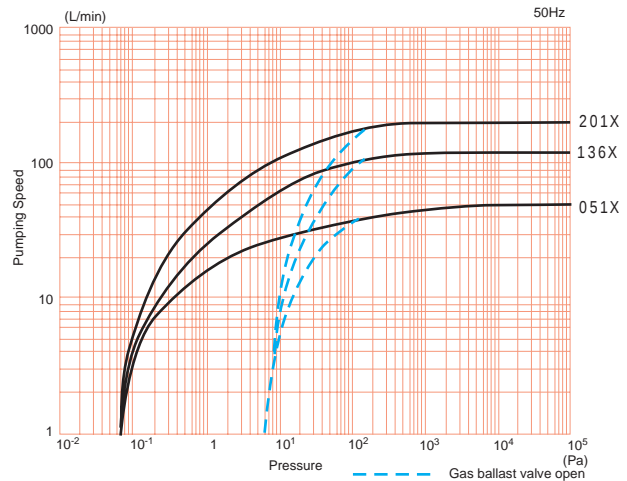
With built-in thermal protector

External Dimension Diagram (unit: mm)



Pumping Speed Curve

GLD Series



Specifications

Unit	50Hz	60Hz	
Actual Pumping Speed	L/min.	200	240
Ultimate pressure	Pa	G.V. Closed 6.7 x 10 <sup>-2</sup> (6.7 x 10 <sup>-1</sup> ) G.V. Open 6.7	
Motor	Three phase, 550W, 4 poles, Multiple-range motor AC200-240V/380-460V		
Full load current	A	3.40 (200V), 4.20 (240V), 2.10 (380V), 2.40 (415V)	3.00 (200V), 3.20 (240V), 1.80 (380V), 2.10 (460V)
Oil capacity	mL	1,100	
Recommended oil	SMR-100		
Weight	kg	28	
Inlet pipe dimensions	KF-25		
Ambient operation temp. range	°C		7 ~ 40
Overall dimensions	mm		170(W) x 516(L) x 約240(H)