

Direct Drive Oil-Sealed Rotary Vacuum Pump (Standard Type) G Series

Features

ULVAC KIKO's Direct-Drive Oil-Sealed Rotary Vacuum Pumps are the sliding vane "Gaede Type". Oil is used to lubricate the rotary mechanism and to seal the vacuum pumping chamber, producing excellent vacuum stability and reliability. Small direct-drive pumps feature faster start-up and quicker pump down compared to belt-driven pumps. In addition, ULVAC KIKO 's G-Series Oil-Sealed Rotary Vacuum Pumps are cost-effective and operate quietly. G-Series pumps are available in single and dual stage

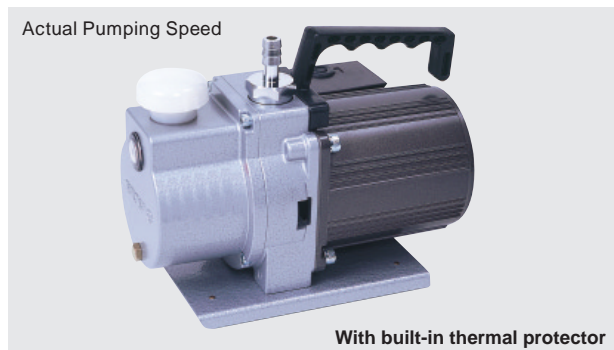
versions with pumping speeds ranging from 5 L/min. to 100 L/min..

Applications

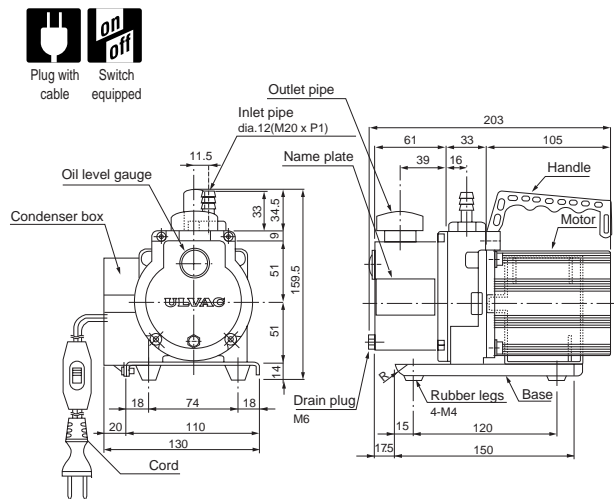
- Scientific and chemical experiments. analyzing appliances, laser related facilities.
- High-vacuum pumping systems.
- Backing systems for electron microscopes.
- Leak detector.

Direct Drive Oil-Sealed Rotary Vacuum Pump (Standard Type)

G-5DA



External Dimension Diagram (unit: mm)

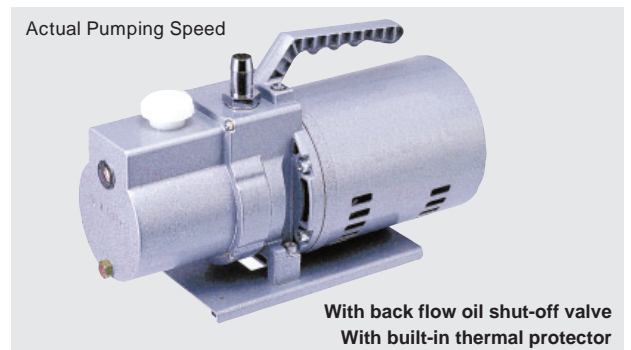


Specifications

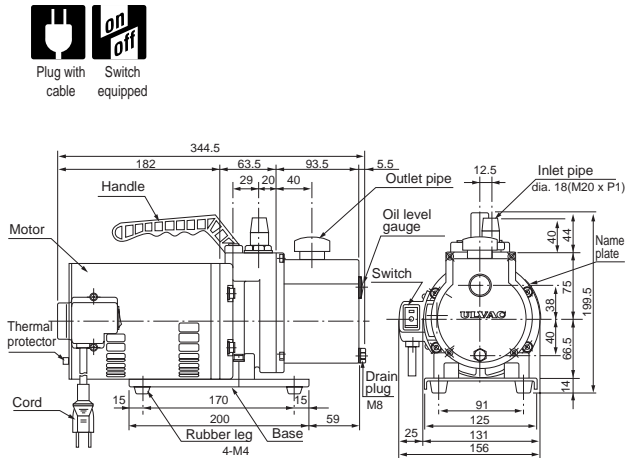
	Unit	50Hz	60Hz
Actual Pumping Speed	L/min.	5	6
Ultimate pressure	Pa	6.7	
Motor		Single phase, 100V, 40W, 4 poles, capacitor run	
Full load current	A	0.92	0.73
Oil capacity	mL	180	
Recommended oil		SMR-100	
Weight	kg	5	
Inlet pipe dimensions	mm	O.D. 12 x I.D. 6	
Ambient operation temp. range	°C	7 ~ 40	
Overall dimensions	mm	130(W) x 203(L) x 159.5(H)	

Direct Drive Oil-Sealed Rotary Vacuum Pump (Standard Type)

G-50SA



External Dimension Diagram (unit: mm)



Specifications

	Unit	50Hz	60Hz
Actual Pumping Speed	L/min.	50	60
Ultimate pressure	Pa	9.3	
Motor		Single phase, 100V, 200W, 4 poles, split phase starting	
Full load current	A	5.6	4.8
Oil capacity	mL	360	
Recommended oil		SMR-100	
Weight	kg	11	
Inlet pipe dimensions	mm	O.D. 18 x I.D. 14	
Ambient operation temp. range	°C	7 ~ 40	
Overall dimensions	mm	156(W) x 344.5(L) x 199.5(H)	

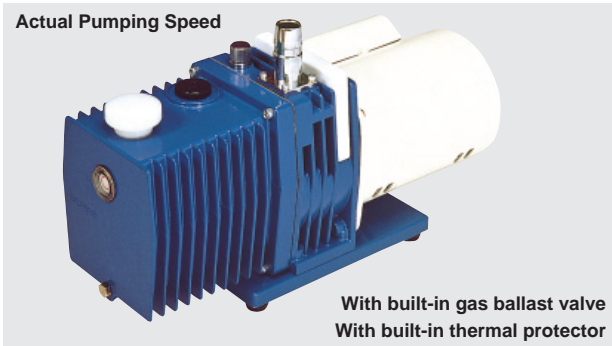
• G Series

Model	Actual Pumping Speed(L/min)	Ultimate pressure (Pa)	Power required	Weight(kg)	Inlet pipe dimensions O.D. x I.D. (mm)	Overall dimensions W x L x H (mm)
* G-5	50Hz 5 60Hz 6	4.0 x 10 ³	Single phase 100V(50/60Hz)	2.5	12.0 x 6.0	80.0 x 199.0 x 158.0
* G-5DA	50Hz 5 60Hz 6	6.7	Single phase 100V(50/60Hz)	5.0	12.0 x 6.0	130.0 x 203.0 x 159.5
* G-10DA	50Hz 10 60Hz 12	1.3	Single phase 100V(50/60Hz)	5.5	18.0 x 14.0	130.0 x 228.0 x 165.0
* G-25SA	50Hz 20 60Hz 24	9.3	Single phase 100V(50/60Hz)	8.5	18.0 x 14.0	156.0 x 288.0 x 199.5
* G-20DA	50Hz 20 60Hz 24	1.3 x 10 ⁻¹	Single phase 100V(50/60Hz)	9.0	18.0 x 14.0	156.0 x 299.5 x 199.5
* G-50SA	50Hz 50 60Hz 60	9.3	Single phase 100V(50/60Hz)	11.0	18.0 x 14.0	156.0 x 344.5 x 199.5
* G-50DA	50Hz 50 60Hz 60	1.3 x 10 ⁻¹	Single phase 100V(50/60Hz)	11.0	18.0 x 14.0	156.0 x 344.5 x 199.5
* G-100S	50Hz 100 60Hz 120	9.3	Single phase 100V(50/60Hz)	21.6	27.0 x 20.0	173.5 x 460.5 x 264.0
* G-100D	50Hz 100 60Hz 120	G. V. closed 6.7 x 10 ⁻² G. V. closed 6.7	Single phase 100V(50/60Hz)	22.4	27.0 x 20.0	173.5 x 460.5 x 264.0

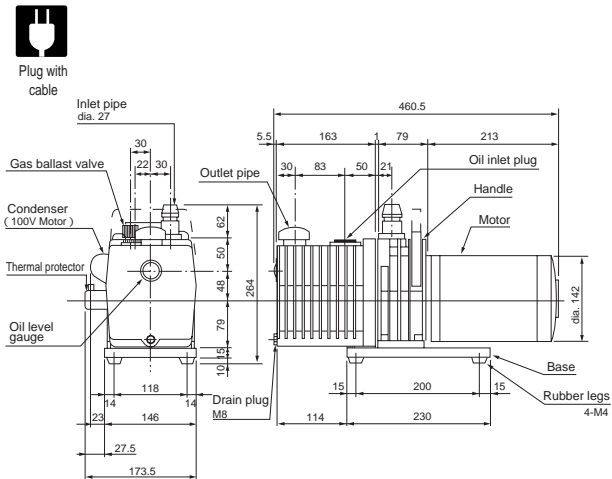
* : Thermal protector equipped. ○ : Back flow prevention mechanism equipped
 ○ : Gas ballast valve equipped. * : CE applicable models available (Please consult us for price.)

Direct Drive Oil-Sealed Rotary Vacuum Pump (Standard Type)

G-100D



External Dimension Diagram (unit: mm)

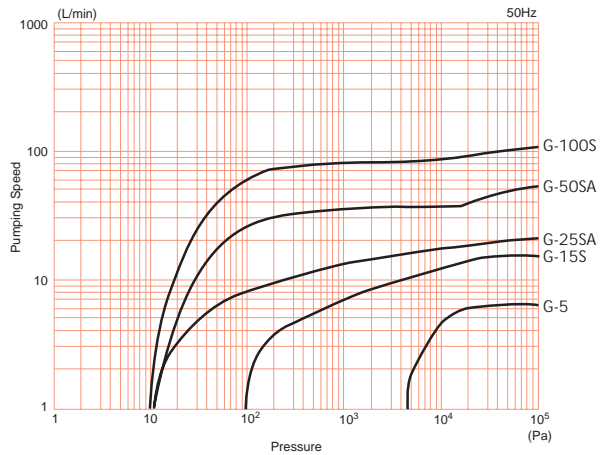


Specifications

	Unit	50Hz	60Hz
Actual Pumping Speed	L/min.	100	120
Ultimate pressure	Pa	G.V. Closed 6.7 x 10 ⁻² (6.7 x 10 ⁻¹) G.V. Open (6.7)	
Motor		Single phase, 100V, 400W, 4 poles, capacitor starting	
Full load current	A	8.6	7.7
Oil capacity	mL	800	
Recommended oil		SMR-100	
Weight	kg	22.4	
Inlet pipe dimensions	mm	O.D. 27 x I.D. 20	
Ambient operation temp. range	°C	7 ~ 40	
Overall dimensions	mm	173.5(W) x 460.5(L) x 264(H)	

Pumping Speed Curve

G Series (Single-stage)



G Series (Two-stage)

